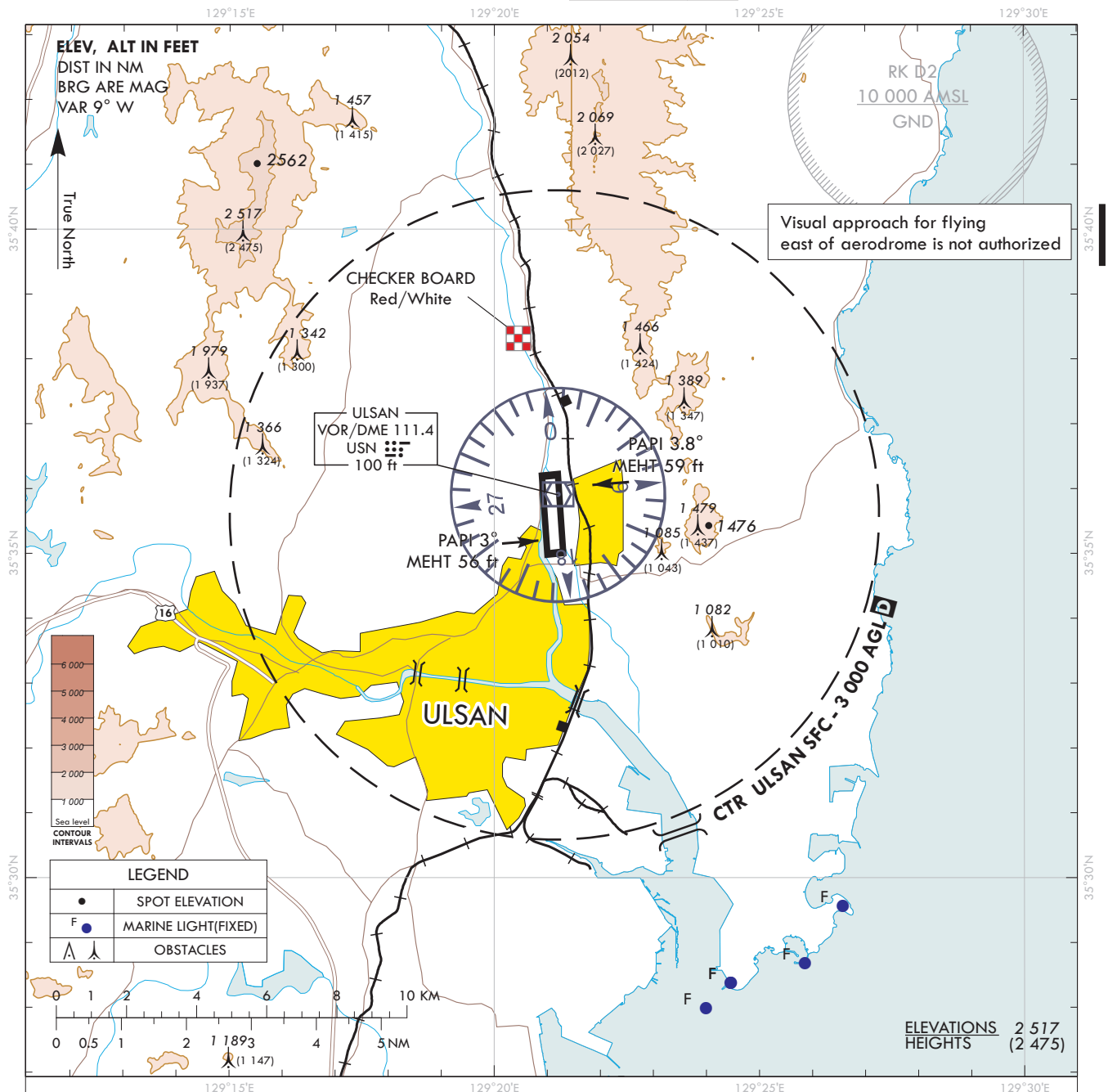


**VISUAL
APPROACH
CHART - ICAO**

AD ELEV 42 ft
HEIGHTS RELATED
TO AD ELEV

POHANG	APP	124.25
		120.2
ULSAN	TWR	118.75

ULSAN/Ulsan



ATS Airspace Classifications

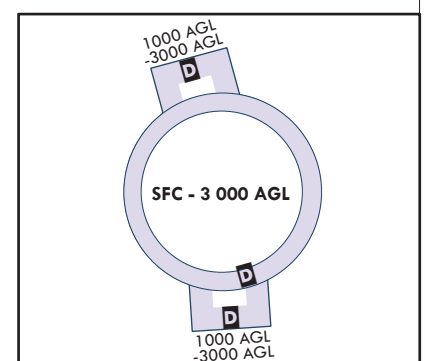
1. Class D : Radius of Ulsan Airport ARP (353536N 1292108E)

a. Vertical limits

- Within 5 NM (GND - 3 000 ft AGL)
- Including areas which are extended northbound from 353936N 1291725E - 354153N 1291639E - 354256N 1292124E
- 354032N 1292212E, and southbound from 353054N 1291903E - 352829N 1291915E - 352845N 1292408E
- 353110N 1292356E(1 000 ft AGL - 3 000 ft AGL)

b. Speed limits

- 250 kt IAS or less below 10 000 ft AMSL
- 200 kt IAS or less at or below 2 500 ft AMSL within 4 NM of the airport



Change : Establishment of note and Information of ATS airspace classifications.